



Malaysian Applied Geography (MAGG)

DOI: <http://doi.org/10.26480/magg.01.2023.01.16>



RESEARCH ARTICLE

THE ART OF HUMAN PARTICIPATION AGAINST ARTIFICIAL INTELLIGENCE WITH GEOSPATIAL INFORMATION SYSTEM IN THE TOURISM INDUSTRY

Mahdi Fallah^a, Tajoddin Karami^b, Moosa Kamanroodi Kojouri^b

^aGeography and urban planning, Kharazmi University, Tehran, Iran.

^bFaculty of Geographical Sciences, Department of Geography and Urban Planning, Kharazmi University, Tehran, Iran.

*Corresponding Author Email: Mahdi.Fallah20@gmail.com

This is an open access journal distributed under the Creative Commons Attribution License CC BY 4.0, which permits unrestricted use, distribution, and reproduction in any medium, provided the original work is properly cited

ARTICLE DETAILS

Article History:

Received 07 February 2023
 Revised 10 March 2023
 Accepted 13 April 2023
 Available online 18 April 2023

ABSTRACT

Art is an integral part of human life. The development of the tourism industry is very important for developing countries that are facing problems such as high unemployment rate, distorted international image, limited foreign exchange resources and a single product economy, mainly oil. Today, the importance of the tourism industry, which is considered an investment in countries, is not hidden from anyone. This capital is measured based on the general health of that area and will be considered as the basis for tourists' decision-making for the destination as a tourism goal. Among these, psychological events are also significant. Compliance with the points mentioned in tourism is mandatory for a society. Time and its management are among the most important things that play a major role in increasing or decreasing stress. People have different solutions for their decisions according to different conditions. In today's artificial intelligence world, it is felt everywhere that humans have entrusted many activities to it, but we must know what the consequences are. The spatial information system has put time and space together in one axis. Transtemporal issues and events that are formed around the axis of time, such as time management, are one of the basic challenges of today's humanity, and on the other hand, spatial issues are considered an integral part of human life. Therefore, real-time GIS is increasingly associated with innovation. The continuation of this research can be related to all industrial and money-making sectors of a region. which shows the importance of this industry in the continuation of urban development. In this research, the maps of a region have been examined as a case to show the importance of people's choice and their participation. In this study, NPGIS is introduced in a general way that enhances space-time-location interaction. In the results of the research, time and its related criteria show their key role and show the intermingling of spatial sciences with tourism.

KEYWORDS

The Art, NPGIS, Geospatial technology, Artificial intelligence

1. INTRODUCTION


The history of tourism in Europe goes back to the pilgrimages of the Middle Ages. Pilgrims of the Canterbury Cathedral in England considered their trip a religious trip and considered it an experience on their day off. Pilgrims started activities that can still be seen today. Participation is a very practical subject whose importance is determined based on time. In fact, time is an effective factor in participation. The topic of time is one of the topics that have been discussed with different points of view. In my opinion, everyone looks at time as they think. What is the same for everyone may be too much for someone and too little for someone. Therefore, there is no time to judge because time itself is the judge. But this is also a kind of looking at time because there is no time when decisions are being made. In general, these are the people who judge, look, manage and make decisions in a way. This is when the issue of partnership comes up. Participation is a fascinating topic that accepts all perspectives. On the other hand, he may not accept or reject a point of view. But participation in which a point of view or thought can make it meaningful or impressionable doubles the attractiveness of participation.

Decision-making with public participation are important as important components in all processes. Also, this component in the conditions of synchronizing with the occurrence of events and being aware of projects from the beginning to the end is the basis for compiling and writing this article, is placed. Today, in the comprehensive planning and development

of cities, important and complex decisions are mandatory for every community and local government or municipality. In this regard, it should be said that making optimal decisions by integrating and combining a set of emerging phenomena such as geographic information system or GIS, which itself is a result of participation, has played a significant role in the flourishing of knowledge and information (Malcolm et al., 2022; Valanszki et al., 2022).

Living in a world without a desk might be tough, but managing a world without time seems remarkably disastrous. The idea that time does not exist is inconceivable to many: time must exist. Almost every experience we have tells us this (Baron et al., 2022). In recent decades, "urbanization", "sustainable development" and "information and communication technology revolution", as the most important global trends, have played the greatest role in the life of human societies. It can be said that the movement of cities towards sustainable development, as well as the increasing role of information and communication technology in decision-making and decisions related to urban management, has transformed the city administration system. If this discourse emphasized environmental, social and economic sustainability in the 1980s, in the 1990s, it emphasized the concept of a smart city, but today it has focused on "sustainable smart cities" (Bibri, 2018).

In fact, open-source urban governance is a new way to attract citizen participation. A participation that is referred to as electronic participation,

Quick Response Code	Access this article online	
	<p>Website: www.magg.com.my</p>	<p>DOI: 10.26480/magg.01.2023.01.16</p>

remote democracy, information technology democracy, electronic consultation, web-based citizenship, online public administration, etc. (Silva, 2013). The main part of urban activities is focused on collaborative development for planning, designing and implementing urban services based on electronic infrastructure, E-services involve change in services as well socio-technological change and relate to change in forms of participation (Wessels, 2010). Studies related to participation in place show that GIS plays an important role in this, which can be different at any time. Regarding the collaborative geographic information system, it should be said that some authors use the abbreviation PPGIS in their studies and others use PGIS, but some researchers use these two terms together and instead of each other in different parts of a study, while there are some who differentiate between these two in nature.

In confirmation of this issue, a study was conducted under the title of political rethinking, political rethinking after GIS or PGIS, which completely changes the nature of the discussion. Therefore, whether PGIS is correct or PPGIS just wastes its time and deals with a completely marginal matter, and we move away from the goal and make a system with this historical identity that was created to support the marginalized strata ineffective (Radil and Anderson, 2018; Dunn, 2007). Today, in the comprehensive planning and development of cities, important and complex decisions are mandatory for every community and local government or municipality. In this regard, it should be said that making optimal decisions by integrating and combining a set of emerging phenomena such as geographic information system or GIS, which itself is a result of participation, has played a significant role in the flourishing of knowledge and information (Malcolm et al., 2022; Valanszki et al., 2022).

NPGIS was published for the first time by Mahdi Fallah in his scientific Doctoral Dissertation and then in a scientific journal (Fallah et al., 2022). And then in another article It continued to develop (Fallah et al., 2023). Having information in time and place is very important. Especially when this information is needed. Despite the incredible evolution of GIS in

recent decades, it is important to consider how geographic information can be effective in the age of information technology. Does the idea of a world in which facts mean nothing cause anxiety? Fear? Maybe even paranoia? Disinformation: The Nature of Facts and Lies in the Post-Truth Era cannot cure all the ills of a post-truth world, but by demonstrating how the emergence of digital technology into everyday life has knitted together a number of seemingly loosely related forces—historical, psychological, economic, and culture—to create the post-truth culture, Disinformation will help you better understand how we got to where we now are, see how we can move beyond a culture in which facts are too easily dismissed, and develop a few highly practical skills for separating truth from lies (Barclay, 2022).

The first step of the study in this direction is to identify the objective and the desired results from the collection of explicit spatial data, which is ideally done with the cooperation of stakeholders. Data collection is usually based on surveying web-based maps. Respondents fill out a survey individually with the help of a facilitator or a decision maker (Fagerholm et al., 2022). Public participation in the development of a large-scale or small-scale municipal plan has certain objectives, such as mechanizing the planning process, helping to transfer or disseminate ideas, and supporting the decision-making process. According to traditional methods, public participation in urban planning and management includes neighbor announcements, interviews, exhibitions, public meetings and focus group discussions, and public questions via telephone, e-mail, teleconference or public meetings (Lewenstein, 2022).

Based on the opinion of the researchers, the success that is the result of planning, designing and deploying the spatial information system based on national participation is effective in increasing the level of public effectiveness. Provided that it is in sync with the support of such decision-making in the course of urban planning and management. This type of guidance mainly depends on the understanding of society, combination of traditional and new web-based participation is shown in (Figure 1).

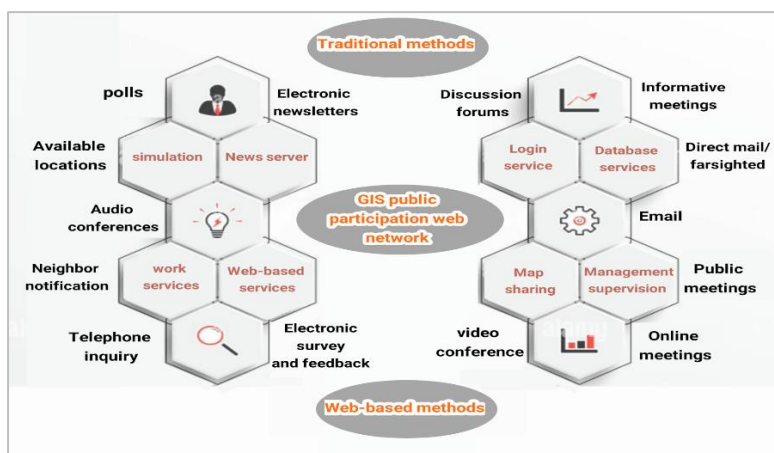


Figure 1: combination of traditional and new web-based participation. (Source: Research and findings of researchers .2019-2022)

In fact, this new type of information is made available from the location information technology along with the geographic information system for easy use by people. Now, these people include the public, developers, decision-making authorities and researchers in group decision-making processes, which, of course, brings with it special and noteworthy help. (Figure 2) It shows the main concept of modern geographic communication.

1.1 Research Questions and Hypotheses

It should be said that according to the mentioned cases, not having a

specific plan as well as environmental conditions are influential factors in participatory decision-making. Here some questions arise in the mind that need to be expressed. 1- Does geographical science interact with the tourism industry? 2- Is the continuation of the tourism industry possible with the emergence of artificial intelligence? 3- What is the determining criterion in collaborative decision-making? Based on these important questions, hypotheses are proposed by the researcher: 1- There is a relationship between geographical sciences and the tourism industry of a region. 2- It seems that artificial intelligence can replace the tourism industry in the coming decades and 3- There is a significant relationship between time factors and collaborative decision-making.

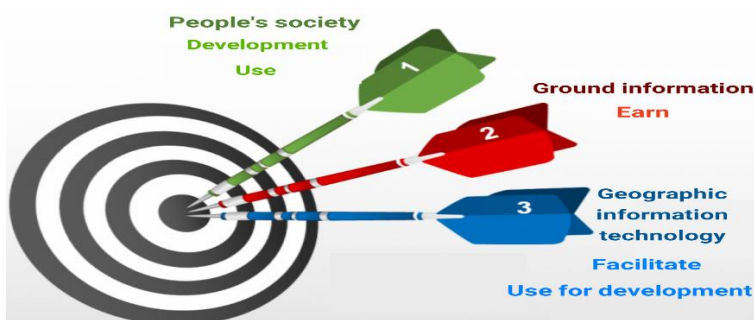


Figure 2: It shows the main concept of modern geographic communication. (Source: Research and findings of researchers .2019-2022)

2. RESEARCH LITERATURE REVIEW

Research questions and hypotheses When it comes to participation, Arnstein (Arnstein, 1969) elementary ladder and her previous topics are not forgotten. Despite the incredible evolution of GIS in recent decades, the understanding of spatial information has not changed over time, with different GIS approaches applied and considering geographic features (such as neighborhoods, cities, and regions) would be considered foreign territory. Currently, however, limiting the term "place" to an external realm is meaningless, as 80% of people's daily lives are spent indoors (Teixeira et al., 2021). In the last decade, the use of collaborative geographic information system has been increasing in topics related to urban sciences. This system, which is based on other knowledge such as critical mapping, collaborative methods, Development-oriented and ideal cities are connected with optimal urban planning, civil governance, community development, resource management, environmental and natural hazards, reaching a smart city, etc.

This approach, in addition to the need for a platform for civil and political interaction and participation, requires the ability of spatial information system specialists to guide its operation toward the main issues of local management, such as optimal service delivery, spatial justice, and politics (Radil et al., 2018; Indrajit et al., 2019; Prener, 2021). Accepting participation as a legitimate political approach and process, due to the belief in the role of people in the development process, has a great tendency to produce and use participation information, including participatory data and spatial information. This tendency provides the grounds for the use of extraordinary capacities that are the result of combining the capabilities of the geographic information system with innovations in the field of information and communication technology and new approaches based on electronic and online participation (Ghose, 2017; Anderson and Radil, 2019).

Such efforts are also a growing part of policy making in the participatory GIS literature, which advocates the use of GIS to foster civic engagement and participation among population groups that have historically been marginalized in formal arenas of governance. , refers to and considers political results to be more valid than social opinions (Sternberg and Anderson, 2014; Anderson and Sternberg, 2013). Therefore, this topic has become a suitable field for urban research in the field of participation and electronic governance. To solve any crisis, a series of solutions and detailed planning is needed. These solutions include: a set of operations that are carried out by government, private and public organizations in facing the crisis with the aim of reducing damage and waste, normalizing conditions and returning to the pre-crisis state.

2.1 Background Research

Evaluation of the collaborative mapping effort, as a proxy for spatial data quality, showed that the facilitated collaborative spatial information system process provides better map production results than individual surveys. The cooperative mapping effort in the sampling group is to facilitate the display of the largest dimensions. With the number of markers and the response time in the range of effort to produce a map that has been reported in other studies of this type of public contributions of participatory GIS (Brown, 2017). In a 2017 study in a developing country, participants were able to match place values and place preferences with current land uses, suggesting that a non-expert in Malaysia can interpret digital maps effectively. It is interesting to establish local knowledge about the place to bridge the knowledge gap with experts. The newness of PGIS as a participatory method can help stimulate public participation, but developing a stronger culture of participation in Malaysia for land use planning requires continuous effort over time (Zolkafli et al., 2017).

In 2019, unshidi projects the potential of dedicated maps for disaster response in a large city, and provides a comprehensive baseline model for municipalities as well as the international community to advance future emergencies and how, in times of crisis, Emergency, participatory geographic information system can easily help a major disaster and is discussed in many studies (Heinzelman and Waters, 2010; Morrow et al., 2014; Ushahidi Haiti Project Evaluation, 2011; Haiti Situation Report, 2019; Haiti Projects, 2019). For the above two examples, it should be mentioned that not taking into account the time of the incident, the weakness of crisis management, which has been emphasized many times by the responsible authorities, and the lack of complete and comprehensive familiarity with it, especially complete familiarity in the country's municipalities with the lack of a location database to obtain Optimum decisions cause things like damages, lack of a precise division of work between the members of the organization, lack of coordination between various devices for planning and making correct and quick decisions at the right time and on time, among these shortcomings in the

country in the field of participation.

Another important point is that, at the time of writing this treatise, in the summer of 2022, Haiti suffered a severe earthquake once again after about eleven years, which caused similar and even greater damages. The United States Geological Survey (USGS) announced on Saturday that an earthquake with a magnitude of 2.7 on the Richter scale occurred off the coast of Port-au-Prince, the capital of Haiti. The director of the Haitian Civil Defense Agency said, unfortunately, the death toll of the recent terrible earthquake was about 1500 people. According to this official, the aid is mostly concentrated in the southwestern regions of the country, which have suffered heavy losses due to the earthquake. About 7,000 people have been injured in the Haiti earthquake and many others are missing as the search for survivors continues. Since the earthquake, many have been sleeping outside their homes for fear of aftershocks, and many have no roofs. For many Haitians, this earthquake was a reminder of the 2010 magnitude 7 earthquake that killed more than 300,000 people. The earthquake 11 years ago caused one million and 500 thousand Haitian residents to become homeless (Weword, 2022).

The problems that have arisen are similar to the previous calamities for which preparations were not considered, such as the release of waste by rescue organizations, which alone has caused many problems. It is in these situations that you should pay attention to time. In a research conducted in 2021, they found that the effect of time is actually management on personal performance as well as the well-being of people, and in its social expression, it is related to job performance, academic progress, and general well-being. Time management also shows a moderate and negative relationship with personal stress or distress, which is related to people's health and is not related to people's gender (Aeon et al., 2021).

2.2 Study Zone

Nowadays, modeling and visualization of 3D models and programming for cities is a big challenge in computer and graphics software. Recently, 3D urban modeling has grown due to the advancement in applications along with the storm of information technology revolution. These technologies have become very important in representing large cities and performing various analyzes in the virtual environment of cities and in order to support urban decision-making (Badwi et al., 2022). It should be stated that the area studied in this research was only for the purpose of investigating this method to respond to the new participation based on the creation of a software and its use. Therefore, it can be checked in any area. Sari is the former capital of Iran (before Tehran), which is located in Mazandaran province in the north of Iran. This city is one of the oldest cities in Iran with a historical background and has a moderate climate. is located at the coordinates of 36°33'48" north latitude and 53°03'36" east longitude and whose is 347/402 people (Urban sari with 6 thousand years old and historical memory, 2018; Statistical yearbook of Iran, 2018). (Figure 3) shows the location of Sari city in the country and in Mazandaran province and in Iran.

3. METHODS AND DATA

3.1 Data

Every day and night is divided into twenty-four hours, and the length of a day and night, for example, solar or astronomical, is not always twenty-four hours, and the length of the days of the year always increases or decreases by a few minutes. In the contract between the public, in order to prevent inconsistencies and anomalies, all days and nights are assumed to be twenty-four hours. Time measurements have occupied many people of knowledge and technology. Events and alternating movements during different times have been used as standard units of time. For example, we can refer to the movement of the sun in the sky, the phases of the moon, and the heartbeat or pulse. Currently, the standard unit of measurement of time is the second, which is defined based on the measurement of the range of electron jumps in the cesium atom, which is element 55 of the periodic table. Time has a high social importance and due to the limitation of time in a day and night and human life, it has a special economic and personal value (Builes, 2022; Malpass, 2021; McAllister, 2020).

Artificial intelligence is a subject that is widely used and developed by humans and the interesting thing is that most people are satisfied with this issue. Because. Doing any activity in a faster time makes people happy. The desire to use it has increased dramatically these days. Artificial intelligence and software development based on participation have also been used in this project. Also, computer software has been used to rank the criteria and statistical scores, and almost the complex calculations that were supposed to be done by humans have been done by computer software easily and in a short period of time.

Artificial Intelligence: Technologies, Applications, and Challenges is an

invaluable resource for readers to explore the utilization of Artificial Intelligence, applications, challenges, and its underlying technologies in different applications areas. Using a series of present and future applications, such as indoor-outdoor securities, graphic signal processing, robotic surgery, image processing, character recognition, augmented reality, object detection and tracking, intelligent traffic monitoring, emergency department medical imaging, and many more (Sharma and Garg, 2021). These processes were carried out based on the choices and reactions of the human brain in decisions and considering artificial intelligence, As stated, artificial intelligence based on human neural networks was designed in such a way that it can estimate decision-making processes for any type of spatial participation activity And its subsets are

like a neural network. Brain activities that can always be edited in this new spatial system in a way. which can be seen in (Figure 4) And the steps used in this case are shown in (Figure 5).

In Fact, Artificial Intelligence offers comprehensive coverage of the most essential topics, including: Rise of the machines and communications to IoT (3G, 5G). Tools and Technologies of Artificial Intelligence. Real-time applications of artificial intelligence using machine learning and deep learning. Challenging Issues and Novel Solutions for realistic applications Mining and tracking of motion based object data image processing and analysis into the unified framework to understand both IoT and Artificial Intelligence-based applications (Sharma and Garg, 2021).

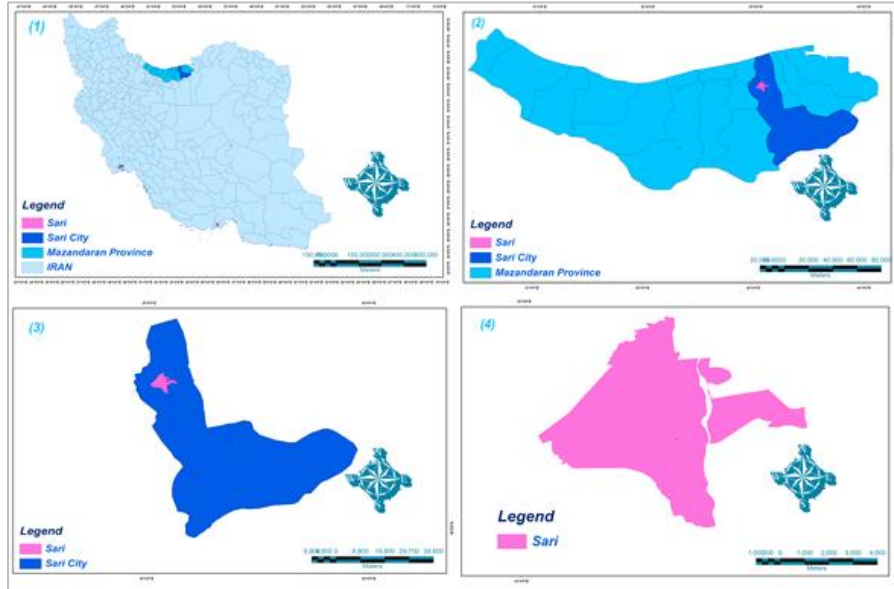


Figure 3: Location of Sari city in Iran. (Source: Research and findings of researchers .2019-2022)

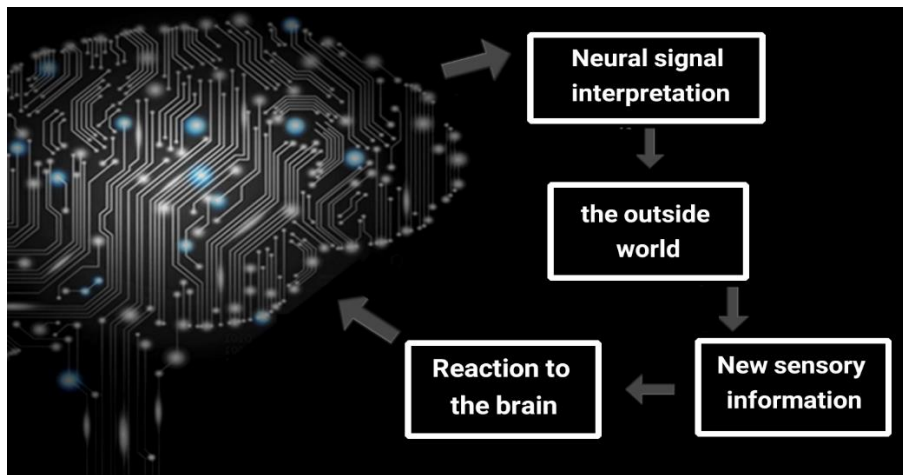


Figure 4: Human mind process based on artificial intelligence. (Source: Research and findings of researchers .2019-2022)



Figure 5: Steps to use neural network. (Source: Research and findings of researchers .2019-2022)

These processes, in which psychological factors are involved, are considered suitable based on observations, questions and answers, and past experiences along with locational factors in participation. This process includes the issues and concerns existing in the current methods of public participation in the planning process and the processes related to urban development based on the summary of the aforementioned studies along with solving the problem of lack of time by higher level officials, at the same time as the emergence of the web. Gives. This human mentality also shows the amount of feedback and the size of accesses. The lack of time here is considered a fundamental problem that the human

mind tries to overcome these limitations with issues such as time management, stress reduction, etc. also The accesses that are established with the human mind and by making contact. It can be seen in (Figure 6). For example, in Europe and America North, according to the laws of many municipalities and local governments, it is necessary to have a certain amount of public participation in decision-making processes. According to a survey, public participation relies on information, a public solution and its effective feedback through public meetings, which is still one of the most specific forms of public participation (Goreis and Voracek, 2019; Alvarez and Mccall, 2019; Lewenstein, 2022).

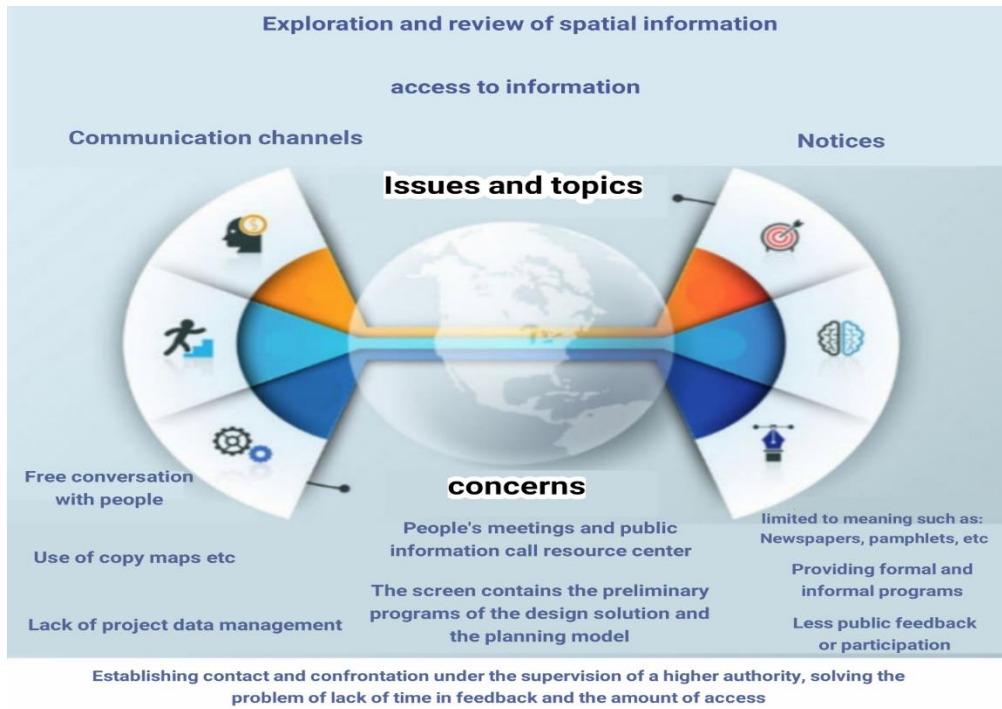


Figure 6: Combining the human mind with artificial intelligence in solving spatial concerns. (Source: Research and findings of researchers .2019-2022)

In artificial intelligence, when we are faced with a large number of variables to solve problems, countless situations may occur. Due to human limitations in memory and processing power, programming directly will be almost impossible. In these cases, using artificial intelligence and machine learning, the computer learns concepts from past data and can analyze and predict the future. When we want to teach a concept like participation to the computer, it does not mean that people of different ages and genders or different points of view are supposed to talk to each

other and express their opinions on different issues. And at the same time, let's look at the horizon with memories of the past. If this was the case, probably no human would seek dialogue and participation in various matters, and there would never be any participation, and mankind would talk alone and with himself until his generation became extinct. Therefore, there was no relationship and no marriage. In fact, the computer is much more ignorant than we think. So we can only talk to a computer in binary or zero and one language.

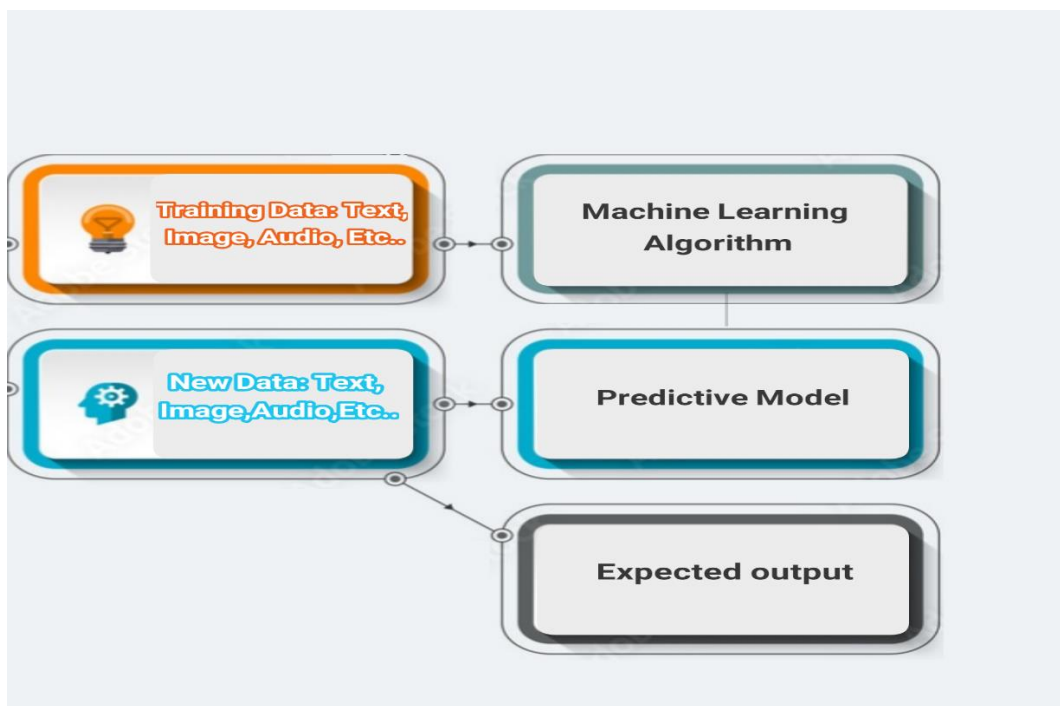


Figure 7: Machine Learning line. (Source: Research and findings of researchers .2019-2022)

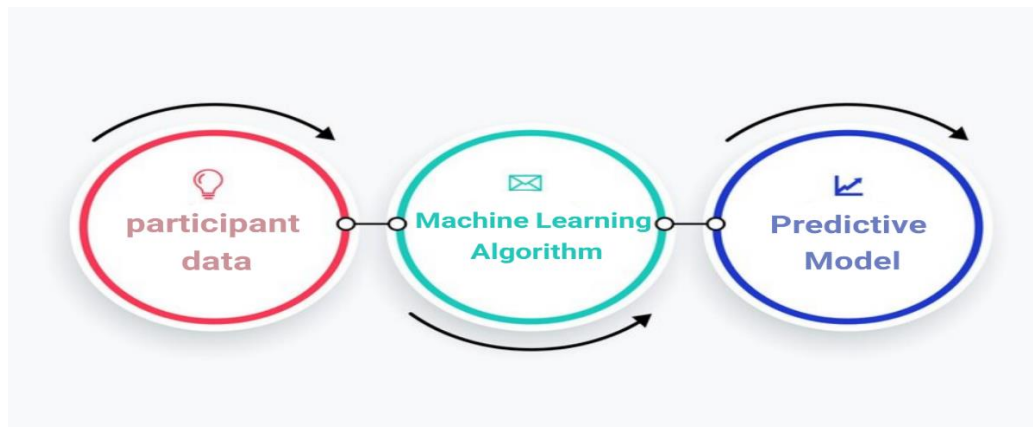


Figure 8: Training stage from training data (dataset). (Source: Research and findings of researchers .2019-2022)

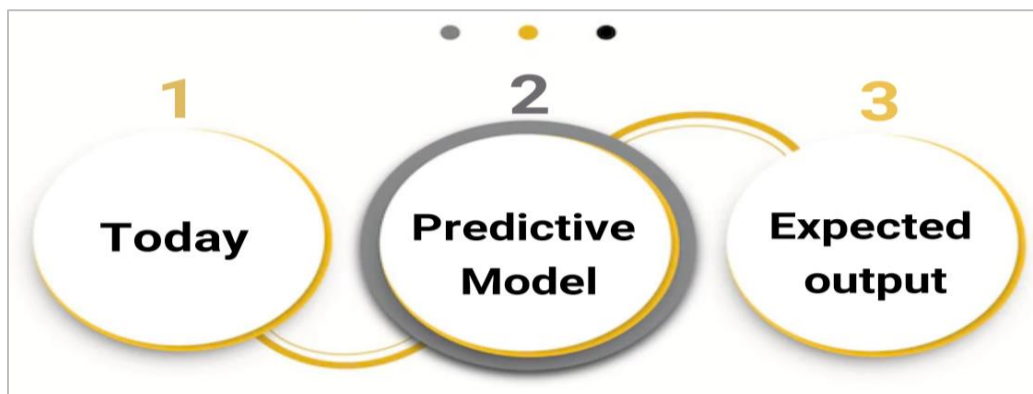


Figure 9: Prediction stage (Source: Research and findings of researchers .2019-20227)

The intelligence that a machine shows in different situations is called artificial intelligence. In NPGIS, the Python programming language was used, which is a high-level language and is close to human language. There are various algorithms in the field of artificial intelligence for machine learning. (Figure 7) shows the common steps among all machine learning methods. In solving the problem, according to (Figure 8), we first give the shared status data of the past days (so-called training data) to the machine learning algorithm. After learning the participation patterns from the data and being trained, the machine learning algorithm delivers a predictive model to us. Now, it is enough to give the features of today's participants to the trained model. In the third stage, the model tells us what is the news tomorrow. If participation was supposed to be done, it prints (1) and if no joint activity is supposed to be done, it prints (0), which is visible in (Figure 9).

3.2 Methods

3.2.1 Network-Oriented Decision-Making Process

The ANP method is one of the multi-criteria decision-making methods in which the criteria or sub-criteria or options (persons and variables) have a dependency or relationship. It should be said that the hierarchical method or AHP can be a special case of the network technique. If there is a problem in which the criteria have a relationship with each other or the sub-criteria have internal relationships, then this type of problem cannot be done through the AHP method because the problem will leave the hierarchical state and create a network state. In this case, the problem should be solved through the ANP method. The process of network analysis is a comprehensive and powerful method for making accurate decisions using empirical information or personal judgments available to each decision maker and by providing a structure for organizing different criteria and evaluating the importance and preference of each of them over alternatives, makes the decision making process easier.

This method can be implemented in software. Network analysis is implemented using Super Decisions software and is applied to a variety of decisions including marketing, medical, political and urban, military, social, and forecasting among many others. The ANP method and its application in various fields are well documented in the operational research literature. This method is included in compensatory methods (compensatory methods are techniques that the weakness of an option in a certain criterion is compensated by the strength of another criterion. For example, suppose you intend to buy a house, the price of the house may be

high, but the location of the house should be good, so the location index somehow compensates for the cost index. Also, the indicators are independent or dependent on each other, which are two important features of this desirable model (Saaty, 2004; Bayazit, 2006).

In order to implement and perform the ANP method, the following steps must be implemented in order, so that the implementation along with the questionnaires and other software in line with the integration with the GIS software is formed correctly: In order to implement and perform the ANP method, the following steps must be implemented in order, so that the implementation along with the questionnaires and other software in line with the integration with the GIS software is formed correctly:

1) Creating a research network diagram: In this step, the problem should be divided into criterion levels and sub-criteria and options, if any, and the relationships between them should be determined. A very important point in this step is the existence of relationships between standards. These relationships can be specified in several ways. You can find out the relationships between standards by asking experts. Suppose a system consists of N clusters or N components, and the elements in each cluster affect all or some of the other cluster elements or have an effect on them. Of course, this effectiveness should be examined according to the special feature that controls the interactions of the entire system (control criteria). Three types of clusters are shown in the figure below: source, destination and intermediary cluster. C_1 represents the source cluster, C_5 represents the destination cluster, and C_2, C_3, C_4 are intermediate clusters. C_2, C_4 have loops that connect them to themselves. These rings represent internal dependency and other connections (edges) represent external dependency.

2) Forming the matrix of paired comparisons: In this step, the elements of each level are compared to other related elements at a higher level in a pairwise manner and matrices of paired comparisons are formed. Also, at the end, a pairwise comparison of internal relationships should be made. These paired comparisons should be answered by Mr. Saati's spectrum of 9, which can be seen below. Of course, first the matrices should be explained to the resident as an example. Imagine that the problem has N clusters named C_1, C_2, \dots, C_N and there are N_i elements in the i -th cluster. Now if two clusters i and j are selected and all the elements of i are paired with respect to the first element j measured; The pair matrix shown below is obtained. This matrix is a pairwise comparison of all the elements of branch i with respect to the first element of branch j . These formulas can be seen.

$$D = \begin{matrix} i_1 \\ i_2 \\ \vdots \\ i_{ni} \end{matrix} \begin{bmatrix} a_{11} & a_{12} & \dots & a_{1n} \\ a_{21} & a_{22} & \dots & a_{2n} \\ \vdots & \vdots & \ddots & \vdots \\ a_{ni,1} & a_{ni,2} & \dots & a_{ni,ni} \end{bmatrix} = \begin{bmatrix} W_{i_1}^{j1} \\ W_{i_2}^{j1} \\ \vdots \\ W_{i_{ni}}^{j1} \end{bmatrix} \quad (3)$$

3) Calculating the inconsistency rate: In this step, we calculate the ANP inconsistency rate. If this rate is less than 0.1, it indicates the consistency of the matrix. 4) Forming the initial super matrix: Using the weight of the obtained pairwise comparisons, we form the initial super matrix. The primary supermatrix is the same weights obtained in step 2 from pairwise comparisons, which can be seen in formula 4.

$$W_{ij} = \begin{bmatrix} W_{i1}^{j1} & W_{i1}^{j2} & \dots & W_{i1}^{jn} \\ W_{i2}^{j1} & W_{i2}^{j2} & \dots & W_{i2}^{jn} \\ \vdots & \vdots & \ddots & \vdots \\ W_{in}^{j1} & W_{in}^{j2} & \dots & W_{in}^{jn} \end{bmatrix} \quad (4)$$

5) Creation of balanced supermatrix: After creating the initial supermatrix, the balanced supermatrix should be created. 6) Creating the limit supermatrix: The balanced supermatrix should be raised to the infinite power so that each row of it converges to a number. That number is the weight of that criterion or subcriterion or option and it is visible in formula 5.

$$D = \begin{matrix} C_1 & \dots & C_n & A_1 & \dots & A_n \\ C_1 \begin{bmatrix} 0 & \dots & 0 & w_{1,n+1} & \dots & w_{1,n+m} \\ \vdots & \vdots & \vdots & \vdots & \ddots & \vdots \\ \vdots & \vdots & \vdots & \vdots & \ddots & \vdots \end{bmatrix} \\ \vdots \\ C_n \begin{bmatrix} 0 & \dots & 0 & w_{n,n+1} & \dots & w_{n,n+m} \\ \vdots & \vdots & \vdots & \vdots & \ddots & \vdots \\ \vdots & \vdots & \vdots & \vdots & \ddots & \vdots \end{bmatrix} \\ A_1 \begin{bmatrix} w_{n+1,1} & \dots & w_{n+1,n} & 0 & \dots & 0 \\ \vdots & \vdots & \vdots & \vdots & \ddots & \vdots \\ \vdots & \vdots & \vdots & \vdots & \ddots & \vdots \end{bmatrix} \\ \vdots \\ A_n \begin{bmatrix} w_{n+m,1} & \dots & w_{n+m,n} & 0 & \dots & 0 \\ \vdots & \vdots & \vdots & \vdots & \ddots & \vdots \\ \vdots & \vdots & \vdots & \vdots & \ddots & \vdots \end{bmatrix} \end{matrix} \quad (5)$$

$$D = \begin{matrix} C_1 & \dots & C_n & A_1 & \dots & A_n \\ C_1 \begin{bmatrix} 0 & \dots & 0 & w_{1,n+1} & \dots & w_{1,n+m} \\ \vdots & \vdots & \vdots & \vdots & \ddots & \vdots \\ \vdots & \vdots & \vdots & \vdots & \ddots & \vdots \end{bmatrix} \\ \vdots \\ C_n \begin{bmatrix} 0 & \dots & 0 & w_{n,n+1} & \dots & w_{n,n+m} \\ \vdots & \vdots & \vdots & \vdots & \ddots & \vdots \\ \vdots & \vdots & \vdots & \vdots & \ddots & \vdots \end{bmatrix} \\ A_1 \begin{bmatrix} w_{n+1,1} & \dots & w_{n+1,n} & 0 & \dots & 0 \\ \vdots & \vdots & \vdots & \vdots & \ddots & \vdots \\ \vdots & \vdots & \vdots & \vdots & \ddots & \vdots \end{bmatrix} \\ \vdots \\ A_n \begin{bmatrix} w_{n+m,1} & \dots & w_{n+m,n} & 0 & \dots & 0 \\ \vdots & \vdots & \vdots & \vdots & \ddots & \vdots \\ \vdots & \vdots & \vdots & \vdots & \ddots & \vdots \end{bmatrix} \end{matrix}$$

1
 2
 3
 4
 5
 6
 7
 8
 9
 10
 11
 12
 13
 14
 15
 16
 17
 18
 19
 20
 21
 22
 23
 24
 25
 26
 27
 28
 29
 30
 31
 32
 33
 34
 35
 36
 37
 38
 39
 40
 41
 42
 43
 44
 45
 46
 47
 48
 49
 50
 51
 52
 53
 54
 55
 56
 57
 58
 59
 60
 61
 62
 63
 64
 65
 66
 67
 68
 69
 70
 71
 72
 73
 74
 75
 76
 77
 78
 79
 80
 81
 82
 83
 84
 85
 86
 87
 88
 89
 90
 91
 92
 93
 94
 95
 96
 97
 98
 99
 100
 101
 102
 103
 104
 105
 106
 107
 108
 109
 110
 111
 112
 113
 114
 115
 116
 117
 118
 119
 120
 121
 122
 123
 124
 125
 126
 127
 128
 129
 130
 131
 132
 133
 134
 135
 136
 137
 138
 139
 140
 141
 142
 143
 144
 145
 146
 147
 148
 149
 150
 151
 152
 153
 154
 155
 156
 157
 158
 159
 160
 161
 162
 163
 164
 165
 166
 167
 168
 169
 170
 171
 172
 173
 174
 175
 176
 177
 178
 179
 180
 181
 182
 183
 184
 185
 186
 187
 188
 189
 190
 191
 192
 193
 194
 195
 196
 197
 198
 199
 200
 201
 202
 203
 204
 205
 206
 207
 208
 209
 210
 211
 212
 213
 214
 215
 216
 217
 218
 219
 220
 221
 222
 223
 224
 225
 226
 227
 228
 229
 230
 231
 232
 233
 234
 235
 236
 237
 238
 239
 240
 241
 242
 243
 244
 245
 246
 247
 248
 249
 250
 251
 252
 253
 254
 255
 256
 257
 258
 259
 260
 261
 262
 263
 264
 265
 266
 267
 268
 269
 270
 271
 272
 273
 274
 275
 276
 277
 278
 279
 280
 281
 282
 283
 284
 285
 286
 287
 288
 289
 290
 291
 292
 293
 294
 295
 296
 297
 298
 299
 300
 301
 302
 303
 304
 305
 306
 307
 308
 309
 310
 311
 312
 313
 314
 315
 316
 317
 318
 319
 320
 321
 322
 323
 324
 325
 326
 327
 328
 329
 330
 331
 332
 333
 334
 335
 336
 337
 338
 339
 340
 341
 342
 343
 344
 345
 346
 347
 348
 349
 350
 351
 352
 353
 354
 355
 356
 357
 358
 359
 360
 361
 362
 363
 364
 365
 366
 367
 368
 369
 370
 371
 372
 373
 374
 375
 376
 377
 378
 379
 380
 381
 382
 383
 384
 385
 386
 387
 388
 389
 390
 391
 392
 393
 394
 395
 396
 397
 398
 399
 400
 401
 402
 403
 404
 405
 406
 407
 408
 409
 410
 411
 412
 413
 414
 415
 416
 417
 418
 419
 420
 421
 422
 423
 424
 425
 426
 427
 428
 429
 430
 431
 432
 433
 434
 435
 436
 437
 438
 439
 440
 441
 442
 443
 444
 445
 446
 447
 448
 449
 450
 451
 452
 453
 454
 455
 456
 457
 458
 459
 460
 461
 462
 463
 464
 465
 466
 467
 468
 469
 470
 471
 472
 473
 474
 475
 476
 477
 478
 479
 480
 481
 482
 483
 484
 485
 486
 487
 488
 489
 490
 491
 492
 493
 494
 495
 496
 497
 498
 499
 500
 501
 502
 503
 504
 505
 506
 507
 508
 509
 510
 511
 512
 513
 514
 515
 516
 517
 518
 519
 520
 521
 522
 523
 524
 525
 526
 527
 528
 529
 530
 531
 532
 533
 534
 535
 536
 537
 538
 539
 540
 541
 542
 543
 544
 545
 546
 547
 548
 549
 550
 551
 552
 553
 554
 555
 556
 557
 558
 559
 560
 561
 562
 563
 564
 565
 566
 567
 568
 569
 570
 571
 572
 573
 574
 575
 576
 577
 578
 579
 580
 581
 582
 583
 584
 585
 586
 587
 588
 589
 590
 591
 592
 593
 594
 595
 596
 597
 598
 599
 600
 601
 602
 603
 604
 605
 606
 607
 608
 609
 610
 611
 612
 613
 614
 615
 616
 617
 618
 619
 620
 621
 622
 623
 624
 625
 626
 627
 628
 629
 630
 631
 632
 633
 634
 635
 636
 637
 638
 639
 640
 641
 642
 643
 644
 645
 646
 647
 648
 649
 650
 651
 652
 653
 654
 655
 656
 657
 658
 659
 660
 661
 662
 663
 664
 665
 666
 667
 668
 669
 670
 671
 672
 673
 674
 675
 676
 677
 678
 679
 680
 681
 682
 683
 684
 685
 686
 687
 688
 689
 690
 691
 692
 693
 694
 695
 696
 697
 698
 699
 700
 701
 702
 703
 704
 705
 706
 707
 708
 709
 710
 711
 712
 713
 714
 715
 716
 717
 718
 719
 720
 721
 722
 723
 724
 725
 726
 727
 728
 729
 730
 731
 732
 733
 734
 735
 736
 737
 738
 739
 740
 741
 742
 743
 744
 745
 746
 747
 748
 749
 750
 751
 752
 753
 754
 755
 756
 757
 758
 759
 760
 761
 762
 763
 764
 765
 766
 767
 768
 769
 770
 771
 772
 773
 774
 775
 776
 777
 778
 779
 780
 781
 782
 783
 784
 785
 786
 787
 788
 789
 790
 791
 792
 793
 794
 795
 796
 797
 798
 799
 800
 801
 802
 803
 804
 805
 806
 807
 808
 809
 810
 811
 812
 813
 814
 815
 816
 817
 818
 819
 820
 821
 822
 823
 824
 825
 826
 827
 828
 829
 830
 831
 832
 833
 834
 835
 836
 837
 838
 839
 840
 841
 842
 843
 844
 845
 846
 847
 848
 849
 850
 851
 852
 853
 854
 855
 856
 857
 858
 859
 860
 861
 862
 863
 864
 865
 866
 867
 868
 869
 870
 871
 872
 873
 874
 875
 876
 877
 878
 879
 880
 881
 882
 883
 884
 885
 886
 887
 888
 889
 890
 891
 892
 893
 894
 895
 896
 897
 898
 899
 900
 901
 902
 903
 904
 905
 906
 907
 908
 909
 910
 911
 912
 913
 914
 915
 916
 917
 918
 919
 920
 921
 922
 923
 924
 925
 926
 927
 928
 929
 930
 931
 932
 933
 934
 935
 936
 937
 938
 939
 940
 941
 942
 943
 944
 945
 946
 947
 948
 949
 950
 951
 952
 953
 954
 955
 956
 957
 958
 959
 960
 961
 962
 963
 964
 965
 966
 967
 968
 969
 970
 971
 972
 973
 974
 975
 976
 977
 978
 979
 980
 981
 982
 983
 984
 985
 986
 987
 988
 989
 990
 991
 992
 993
 994
 995
 996
 997
 998
 999
 1000
 1001
 1002
 1003
 1004
 1005
 1006
 1007
 1008
 1009
 1010
 1011
 1012
 1013
 1014
 1015
 1016
 1017
 1018
 1019
 1020
 1021
 1022
 1023
 1024
 1025
 1026
 1027
 1028
 1029
 1030
 1031
 1032
 1033
 1034
 1035
 1036
 1037
 1038
 1039
 1040
 1041
 1042
 1043
 1044
 1045
 1046
 1047
 1048
 1049
 1050
 1051
 1052
 1053
 1054
 1055
 1056
 1057
 1058
 1059
 1060
 1061
 1062
 1063
 1064
 1065
 1066
 1067
 1068
 1069
 1070
 1071
 1072
 1073
 1074
 1075
 1076
 1077
 1078
 1079
 1080
 1081
 1082
 1083
 1084
 1085
 1086
 1087
 1088
 1089
 1090
 1091
 1092
 1093
 1094
 1095
 1096
 1097
 1098
 1099
 1100
 1101
 1102
 1103
 1104
 1105
 1106
 1107
 1108
 1109
 1110
 1111
 1112
 1113
 1114
 1115
 1116
 1117
 1118
 1119
 1120
 1121
 1122
 1123
 1124
 1125
 1126
 1127
 1128
 1129
 1130
 1131
 1132
 1133
 1134
 1135
 1136
 1137
 1138
 1139
 1140
 1141
 1142
 1143
 1144
 1145
 1146
 1147
 1148
 1149
 1150
 1151
 1152
 1153
 1154
 1155
 1156
 1157
 1158
 1159
 1160
 1161
 1162
 1163
 1164
 1165
 1166
 1167
 1168
 1169
 1170
 1171
 1172
 1173
 1174
 1175
 1176
 1177
 1178
 1179
 1180
 1181
 1182
 1183
 1184
 1185
 1186
 1187
 1188
 1189
 1190
 1191
 1192
 1193
 1194
 1195
 1196
 1197
 1198
 1199
 1200
 1201
 1202
 1203
 1204
 1205
 1206
 1207
 1208
 1209
 1210
 1211
 1212
 1213
 1214
 1215
 1216
 1217
 1218
 1219
 1220
 1221
 1222
 1223
 1224
 1225
 1226
 1227
 1228
 1229
 1230
 1231
 1232
 1233
 1234
 1235
 1236
 1237
 1238
 1239
 1240
 1241
 1242
 1243
 1244
 1245
 1246
 1247
 1248
 1249
 1250
 1251
 1252
 1253
 1254
 1255
 1256
 1257
 1258
 1259
 1260
 1261
 1262
 1263
 1264
 1265
 1266
 1267
 1268
 1269
 1270
 1271
 1272
 1273
 1274
 1275
 1276
 1277
 1278
 1279
 1280
 1281
 1282
 1283
 1284
 1285
 1286
 1287
 1288
 12

place and other factors were ranked next. The rating was done by computer software. Its results can be seen in table 2. Also, Weighting was

done with SPSS 22.0 statistical software. And its diagram can be seen in (Figure 14).



Figure 11: Network analysis process and its activities (Source: Research and findings of researchers .2019-2022)

Table 1: Final Weight and Ranking of Sub-Criteria.					
Criterion	Criterion weight	sub-criterion	Relative weight of the sub-criterion	Subcriterion Final weight	The final rank of the sub-criterion
Social	0/309	Strategic insight	0/117	0/0361	8
		transparency	0/543	0/1679	3
		Lawfulness	0/255	0/0788	4
		Responsiveness	0/085	0/0262	9
Sociol-Economic	0/109	Transportation	0/097	0/0107	10
		Urban infrastructures	0/333	0/0365	7
		Participation and location	0/570	0/0623	5
		Effectiveness and efficiency	0/089	0/0517	6
Economic - Social	0/582	Technologies & accessibility tools	0/323	0/1881	2
		GIS government partnership	0/588	0/3417	1

Source: Research and findings of researchers .2019-2022

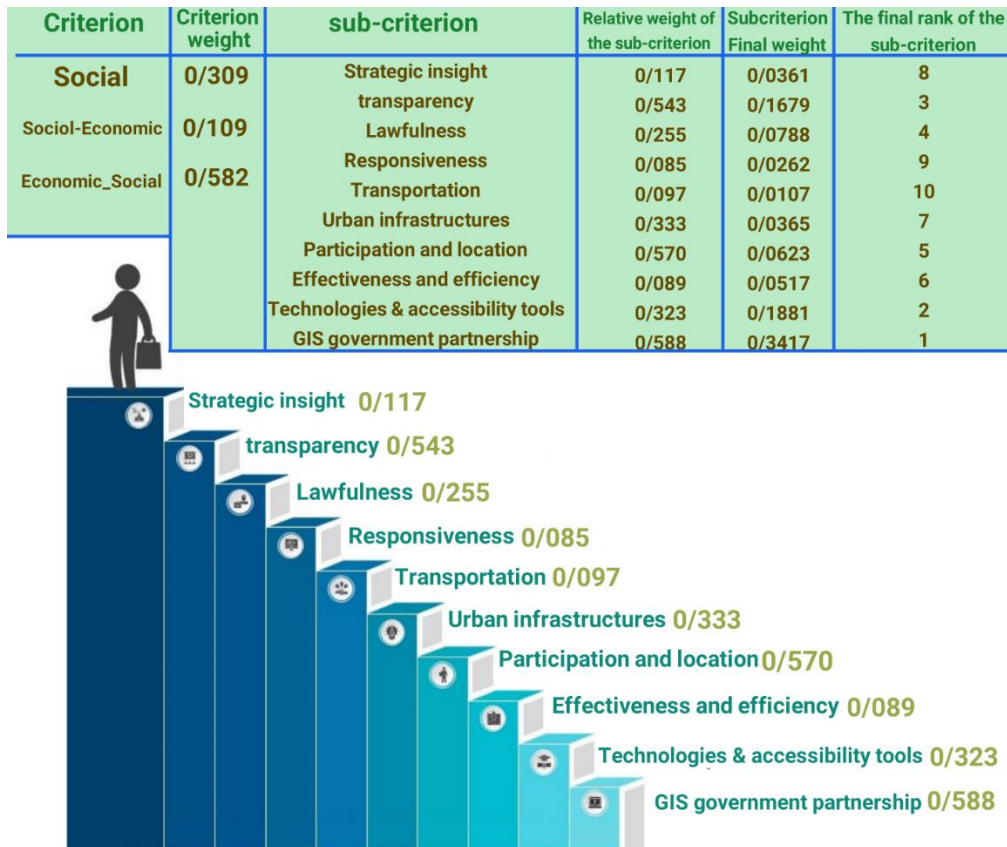


Figure 12: Diagram of network analysis process in this study (Source: Research and findings of researchers .2019-2022)

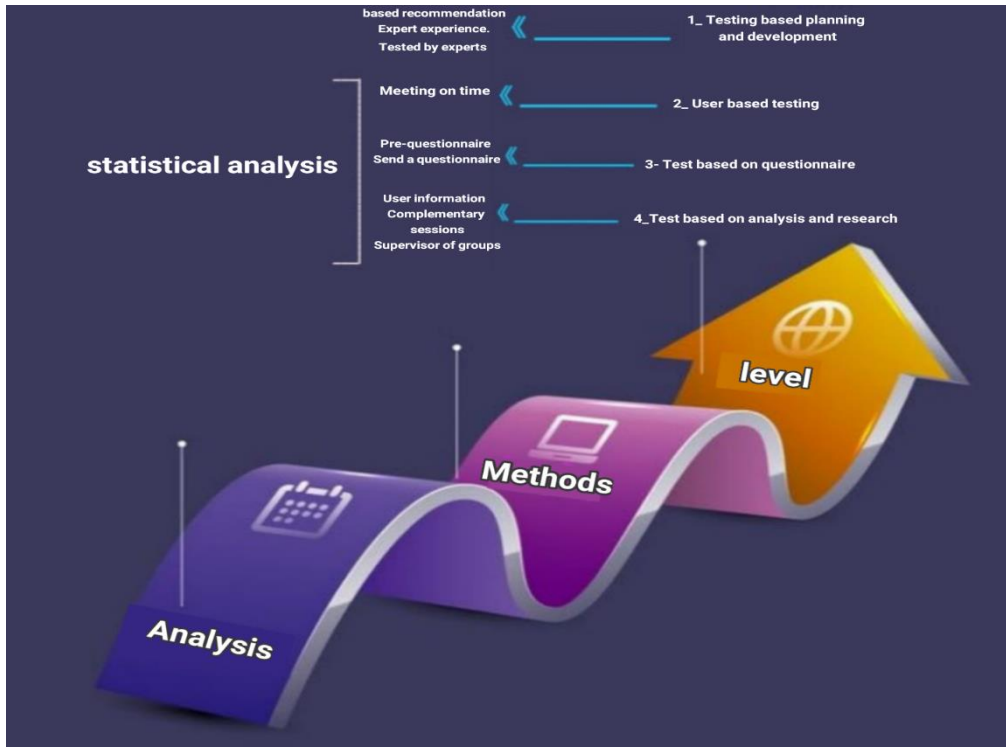


Figure 13: Steps of analysis, review and statistical evaluation (Source: Research and findings of researchers .2019-2022)

Table 2: Results of Friedman's Rank Test for Criteria.

	Dimensions	Average Rank	Rank	K square	df	Sig
Transportation	C ₁	4/72	10	47/765	9	0/000
Timely activity	C ₂	5/90	2			
Citizenship rights	C ₃	5/20	8			
Complications	C ₄	5/80	4			
Residue	C ₅	5/55	5			
the traffic	C ₆	5/00	9			
participation	C ₇	5/55	5			
Cell phone	C ₈	5/86	3			
Time	C ₉	5/97	1			
Privacy	C ₁₀	5/46	7			

Source: Research and findings of researchers .2019-2022

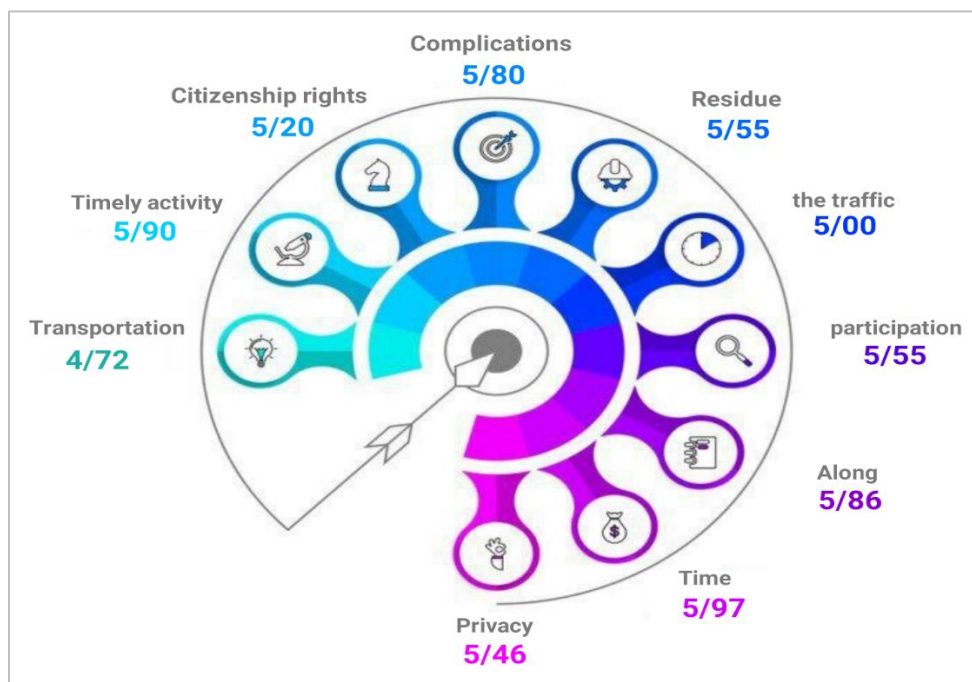


Figure 14: Statistical diagram of the study (Source: Research and findings of researchers .2019-2022)

4.3 Programming and Creating Open-Source Software.

It was explained in the previous sections, the priority of creating software with the help of artificial intelligence, in addition to statistical questionnaires, as well as ranking with network and hierarchical analysis simultaneously, are considered other innovations of this study. Artificial intelligence and the use of neural network machines and the importance of time play a significant role in this part. Python has been used for programming, an example of which can be seen in (Figure 15). This image is one of the stages of making NPGIS software, which was selected for display based on discretion. The main importance of the information related to the user's knowledge and work experience with webGIS programs, collaborative planning, education and general web surfing. This information makes it possible to interpret the corresponding responses and reactions from different participants and also helps to determine the limits on the complexity of the prototype program (Brunsdon and Comber, 2021; Arribas-Bel et al., 2021).

The last decade has seen increased computational intelligence to solve problems that lack a definite solution or are difficult to solve. The human biological neural network inspires artificial neural networks (ANNs), and research on neural networks has been accompanied by an understanding and study of the human brain's structure and learning function. There is no requirement for a set of special rules to solve the problem in this computational method. The topic of time, which is one of the main criteria of NPGIS, was discussed for the first time by Mehdi Fallah, the researcher of this article, in his doctoral Dissertation. According to the researcher's opinion, which he has already stated in his articles, time is something that does not exist in reality and is created only on the basis of contracts between humans. According to the discretion of the creator of this environment, which includes open source software, it is possible to access it for the public and for all ages. Of course, this action is done according to the terms and conditions of each region or each place, which will indicate its flexible activity (Fallah et al., 2022; Fallah et al., 2023).

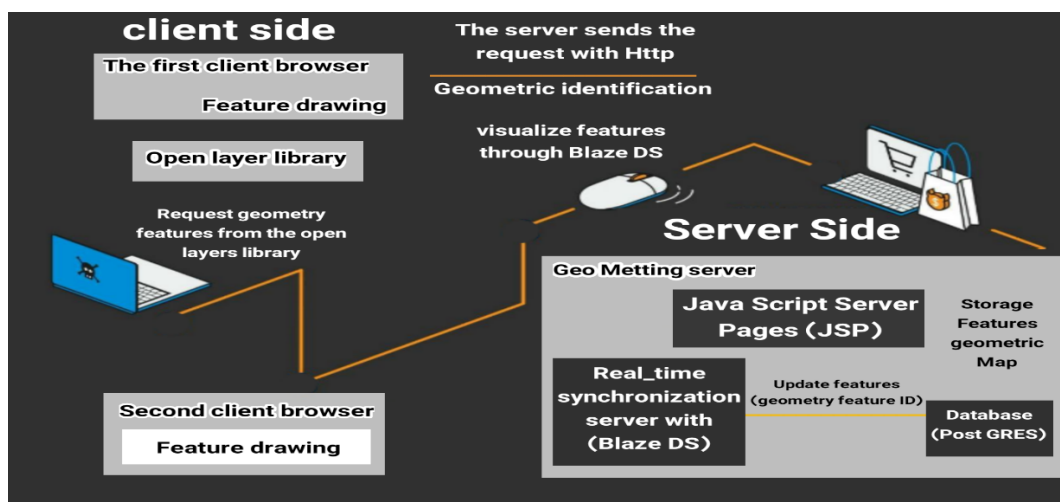


Figure 15: Steps of analysis, review and statistical evaluation (Source: Research and findings of researchers .2019-2022)

4.4 Progress in Awareness of Participation in The Order of The Stages to This Study

By reviewing similar fields in the communication resulting from collective participation, it was determined that the relationship between a common set of geographic information system prototypes and the level of public participation, which shows the exchange of information at different levels of participation, that is, the power of citizens and their non-participation and cases. Such has been the case between the common people and the decision makers. In our relationship between the level of participation and the proposed information system, it was also found that this type of approach had the ability to expand after implementation and it was needed more than ever, which was ignored for any reason. Each level of public participation is directly related to one or more components of NPGIS, namely notification, GIS-based discussion forum, real-time map sharing, and virtual meeting environment. Finally, (Figure 16). shows the role of participation proposals and increasing the level of participation at the local, national and transnational levels. This form has been proposed considering the spatial and temporal conditions of real-time.

4.5 Participation in Tourism Information

4.5.1 Tourism in the Place

One of the important parts of spatial partnership is participation in tourism and the development of this industry. Consequently, cities with standard spaces and amenities can attract a large number of tourists. Because the space of cities should be attractive not only for its citizens but also for tourists and express the special identity and characteristics of that city. Recent years have been an exciting time for tourists interested in urban tourism. As a complementary process, branding the potentials of urban tourism endows the city with a distinct identity and contributes significantly to the competitiveness approach in cities, which is now referred to as the primary link in the economic structure. While the global coronavirus outbreak significantly reduced domestic and international tourism and posed a severe threat to the industry, tourists' sense of security and easy access to medical facilities. Therefore, the closer a location is to medical and health care facilities, the greater the potential for tourism. Consequently, the COVID-19 virus has been the most influential crisis to affect countries, organizations, and various economic sectors since World War II. So knowing which place has what dangers is

also a part of participation in announcing the occurrence of danger in that particular place. And this is another important advantage of participation-oriented spatial information (Ugur and Akbiyik, 2020; Bustomi and Avianto, 2021; Novy, 2019; Kamaruddin et al., 2022; Shirshamsi et al., 2021).

4.5.2 The Connection Between Spatial Participation and The Important Topic of Tourism

Tourism is one of the activities of attracting capital in countries, and it is necessary to have real-time information about it. To create infrastructure and develop tourism in many countries, traditional and old methods such as television and radio, books and even newspapers or catalogs are used, which are almost obsolete in modern societies today. Also, in terms of the depth of application and development of information technology in tourism management, it is far behind the general level of tourism. At the time of explosion of real-time information and modern technologies, which has turned the center of attention, as well as the emergence of the new generation of the Internet and new software, which the present study is also included in this category, they are very popular and known to the public. Even now, the use of these tools and methods are very conventional and low-cost, unlike traditional methods, because they do not require extensive production such as printing and distribution of the latest updates and information. As a result, they will be able to answer many essential and specific tourism questions, such as which historical sites exist in a particular country and where they are located. Incorrect decisions can increase participants' confidence in negative results of any type of test. This trust is not enough to influence people and it may also affect people's health and belief (Ugur and Akbiyik, 2020; Novy, 2019; Mariakakis et al., 2022).

Urban tourism has developed into one of the most efficient and effective economic and recreational activities in the modern era since the late second half of the twentieth century. Although attention to urban tourism development is increasing, this paper indicates that no comprehensive study has yet combined the two subjects of tourism development and branding for spatial modeling (Moghaddam et al., 2022). Most respondents are interested in web development. However, some, not many, do not agree with this process. Some of the respondents disagreed and were interested in web development. Therefore, many respondents agreed the website was easier to access and friendly use for tourism (Chen

et al., 2022). Tourism is one of the economic sectors that have the greatest impact on the economic and social context of nations, as its multiplier effect contributes to the growth of other sectors. It includes transportation, accommodation, food and beverage, entertainment, leisure, historical and cultural experiences, tourist attractions, shopping, and other amenities available to travelers in foreign countries (Kamarudin et al., 2022).

The tourist industry is important for every society and one of the main points in the current research topic is national participant, which shows

the importance of research even in this field. National participant in the tourism industry and the information that is made available have both public and private aspects in the countries Information such as the location of recreational places, holy places, historical places is such information that is obtained through the participation of foreign and domestic tourists of a country. In some cases there are places where only local residents can act as a proper guide to help tourists. In general, collaborative location information is important in most activities.. (Figure 17) shows Participation-oriented information at the national level for use in the tourism industry.

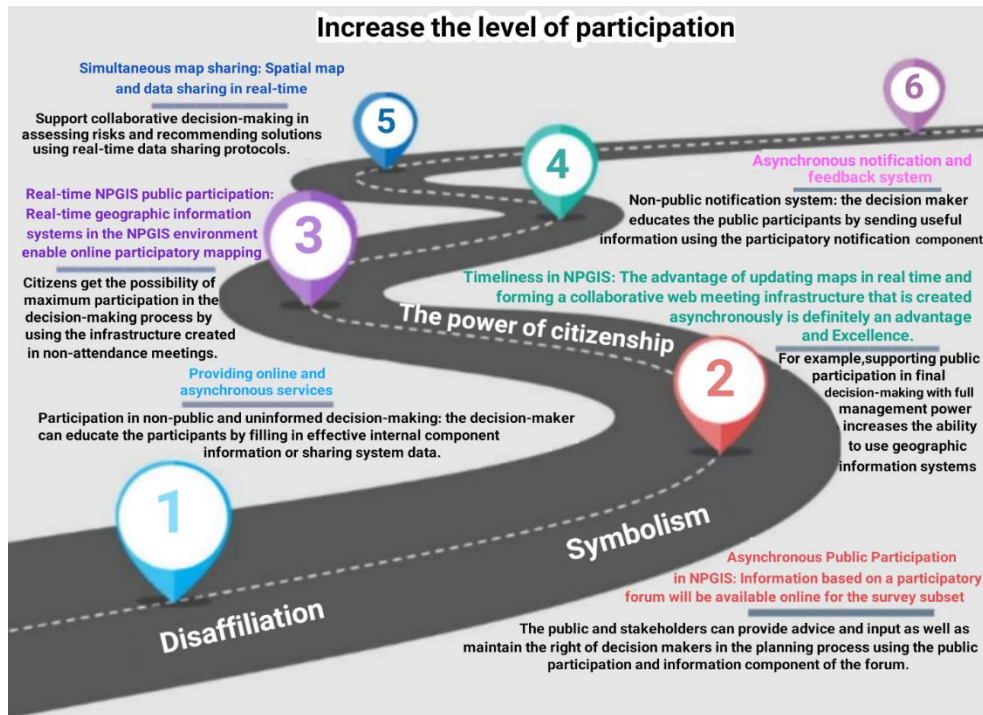


Figure 16: Increase the level of participation (Source: Research and findings of researchers .2019-2022)



Figure 17: Participation-oriented information at the national level for use in the tourism industry (Source: Research and findings of researchers .2019-2022)

There are different types of tourism, each of which can be used separately. But blessed is the place or area that has all these things, which can be seen

in (Figure 18). Using a systematic location system helps this activity. And also The system introduced in this study.

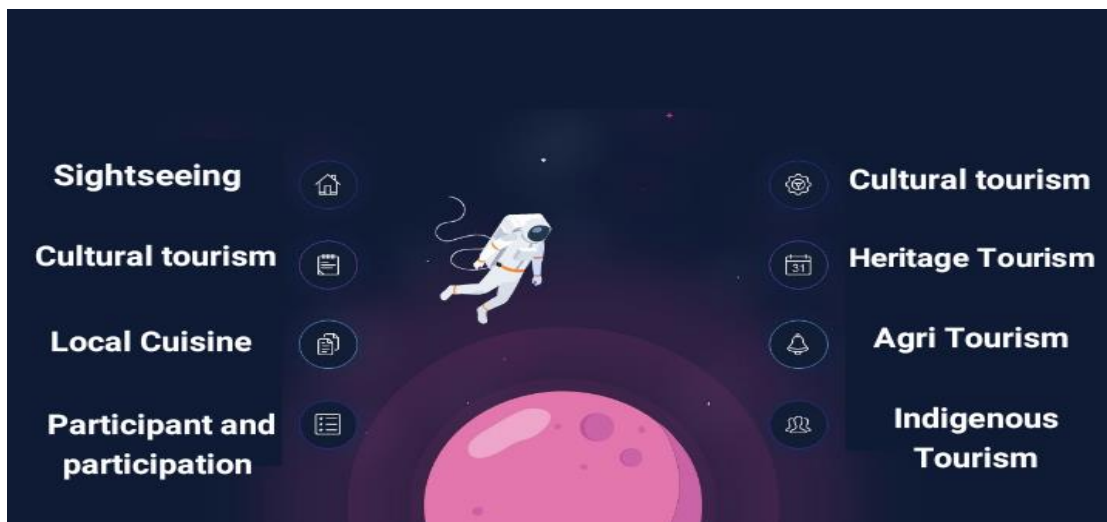


Figure 18: Different types of functional tourism (Source: Research and findings of researchers .2019-2022)

4.6 The Importance of Responding in Real-Time or Synchronous

In a clear way, it should be mentioned that if we want to consider criteria for Participation of decision-making for urban planning in this study, we will face countless criteria. Accordingly, the time factor turned the center of attention to itself. It should be kept in mind that you cannot fight with technology and progress. Also, all criteria and topics have a common feature called time. However, the very big problem that experts are facing in 2022 is that everyone knows everything by using tools like Google and YouTube, and in the end, they do not become experts in any subject because they are only observers of generalities. Programs should be designed in such a way that they have the ability to talk in real time so that users can use topics aligned with real objects for geographic reference.

Real-time conversation integration provides a powerful and flexible way to manage spatially referenced topics. (Figure 19).is an example of the wrong cycle of establishing public contact with the municipal body, which leads to neglect. The reason for this topic is the response of the operator or the officials along with the delay and in some cases ignoring the issue.

Reasons include traffic, being far from the location of the report, lack of facilities, and issues like that. The importance of studying in this section becomes clear, although other reasons have been mentioned in the previous sections. Therefore, answering at the right time or at the synchronous or real-time and any other title we put on it is not only important, but also necessary in some cases.

4.7 Participant

4.7.1 Participation in The Form of Public Services

The value proposition of a great city is not limited to encouraging jobs, but creating opportunities for all city residents to reduce inequality and protect against harm. Opportunities should be equal for everyone. When a problem is solved in a short period of time, it actually benefits the whole city, and everyone does the right thing based on the time required, and like dominoes, the problems are solved. . Based on the suggestions made with the general public and stakeholders, places were identified at the city level that could be very useful for medical activities and services. It can be seen in (Figure 20).

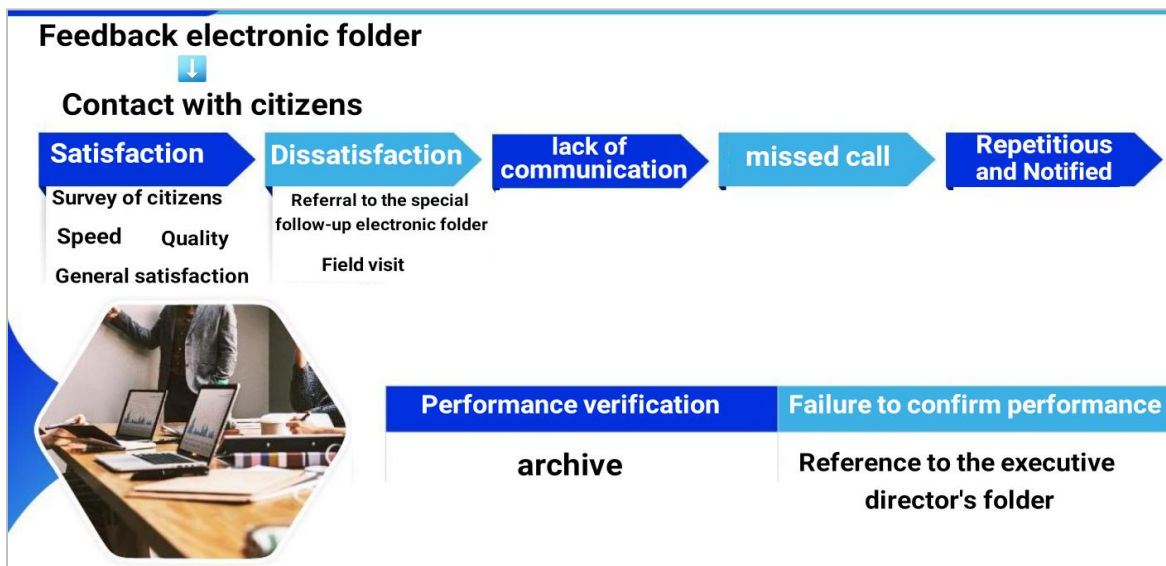


Figure 19: The false cycle of public accountability (Source: Research and findings of researchers .2019-2022)

As seen in (Figure 20), participation is possible in any field and location activity. Especially when spatio-temporal software along with its environment provides this platform easily and makes it available to the public. The abundance of responses, even with a small number of participants, indicates an easy-to-use interface. This means that even the hands of those who do not have mass planning experience in routing will be able to create a new network of routes with confidence and without any doubts. Therefore, in addition to effective decision-making, the paths that are created in a place will be clear and realistic. In this usability section,

the participants were asked to identify concerns related to planning and participation in the development of Sari city. This is the subject of investigation and how to respond to the moment and simultaneity created in this scenario. Evaluating the usability of the GIS map sharing system as a support tool for participation urban planning, which is a fictitious example and can be a justified and optimal participation basis.

Therefore, a person who is active in this field was used. 15 municipal employees were selected to share the map and introduce it in an

interactive work environment. Everyone's behavior and answers were observed and recorded using a computer and creating a questionnaire. The purpose of this study was to test the usability of the prototype by presenting a fictitious case study related to Sari Municipality for its planning and development based on the public accountability system. With the assumption that according to its regional reform plans, it was possible to make reforms in any place and region. Spatial data related to the corrections were prepared using software in the form of GIS files, which are uploaded to the computer as a web-based map layer so that it can be displayed as an open and public layer. This issue has been extremely important that participation in any sector is possible and will improve the situation, especially if it is real-time.

You can also see in (Figure 21) that the software has the ability to show the entire area in the zones where it is located, this is an add-on to GIS, which can instantly or in real time perform all the features for all kinds of services such as aid, tourist services, postal services, applying all opinions including people and officials, providing assistance in the fastest possible time, etc.. which is a very new feature that revolutionizes the world of GIS, coding and programming. As mentioned before, due to the protection of personal privacy, more explanations are possible in this case. The final locations that can be seen in the Google image indicate what activity or help each area is closest to, which in turn is completely new. This area with dimensions of 36,423,900,000 square meters is located in UTM zone 39.

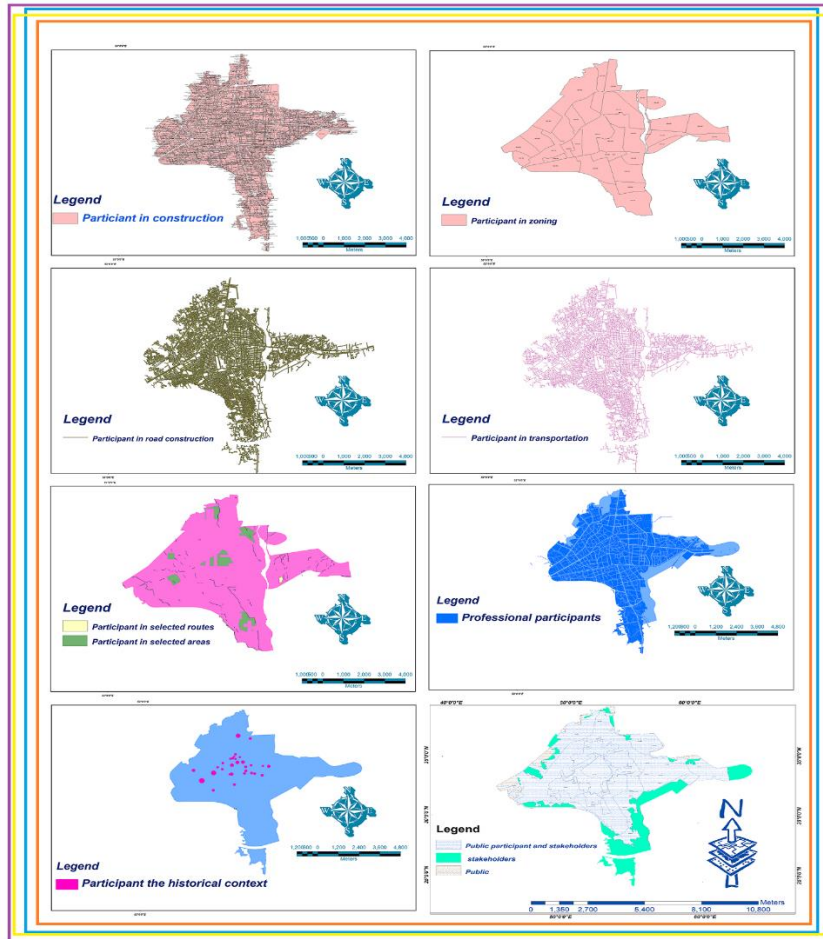


Figure 20: National participation (Source: Research and findings of researchers .2019-2022)

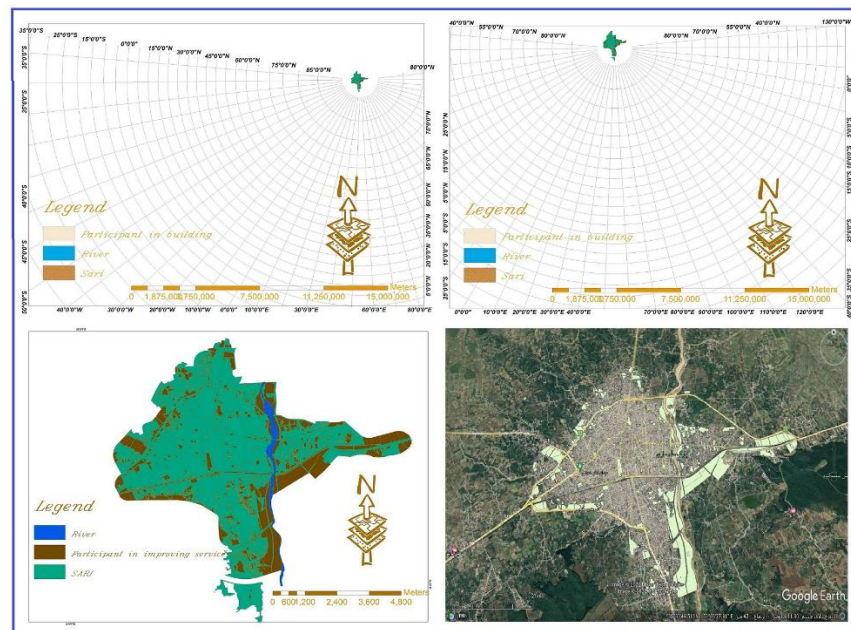


Figure 21: Location priorities in the final image of the study (Source: Research and findings of researchers .2019-2022)

5. DISCUSSION

From the day when humans have access to food, they followed it and immediately understood that there are only two other things they need to live better, the first is the knowledge that is related to the inner child and the need to know, and the second is the issue of environmental health. , which leads to individual or collective form and in a shared form. In fact, all three mentioned cases require the process of participation, and participation is a problem beyond the imagination of individual intelligence, because it requires collective intelligence. So humans need three things for survival, 1) food, 2) awareness and 3) environmental hygiene. By observing the above, the human being will no longer be considered a sick person and will only worry about his future, as the attitude of the future and the perception of each person about it are different. These reasons were always emphasized on the issue of time, because man has turned prediction or prevention into worry and in some cases obsession and mental stress.

An example of that is the children of man, if they give him the things he wants and there is no talk of greed for money and material issues, there will be no more complaints. For example, in America, they say that equality and opportunity are the same, which means that everyone can become president with this kind of view. In the opinion of the researcher and in fact, these statements are not acceptable and are more likened to a joke, because in equality of opportunities, equality is established when all human beings have the same type of equality, such as having security, health, housing, Peace, food, clothing and the like and nothing else, in fact, the minimum should be provided to each person first so that all people can enjoy the kind of equality that was said and then the talk of equality comes. So Participation is one of the important ways to achieve equality in the true sense.

5.1 Testing Hypotheses and Answering Questions

- 1) The first hypothesis is confirmed in line with the answer to the raised question. Because as seen in the results, the tourism industry is mixed with spatial sciences, especially geographical sciences.
- 2) In response to the second question, it should be said that artificial intelligence will not be able to examine the mental and psychological factors of people in very different conditions and provide a different version of it. Therefore, touristic places indicate the superiority of cities, and fortunately, the second hypothesis is rejected.
- 3) Regarding the third question, first of all, the hypothesis proposed in this research should be confirmed, because it is precisely this time factor that strongly affects people's decisions, behavior and answers.

6. CONCLUSIONS

The tourism have a special role in the process of urban development but As long as people do not benefit from mental and psychological health and are constantly involved with current events, they will suffer concrete mistakes in decisions in the same way. The results of this collaborative study have consciously interwoven all remote sensing sciences and pure GIS science in a completely specialized way. Of course, this was the topic that the researcher reached in the middle of the road. Because the main activity of this research was to introduce a new research using space-time-place and to invent software related to these features, the details of the study were not mentioned for different reasons, including the protection of personal works and privacy. which is considered natural.

As mentioned in the previous sections, these days the desire to use artificial intelligence has increased greatly. Because I think they don't know what they are facing. Doing any activity in a faster time makes people happy. But at what price? The loss of human relationships, the adjustment of the workforce and people's disappointment, the loss of human emotions and the use of logic and machine intelligence, which sometimes turns out to be wrong and may make people sacrifice their rational decisions. Can artificial intelligence take responsibility for these? Artificial intelligence is a subject that is widely used and developed by humans. Finally, I say this with my personal opinion so that it will be recorded in history: artificial intelligence is infinitely more dangerous than nuclear weapons. Time was not lost in this study because according to the researcher there is no such thing as time.

Time is a contractual matter between humans that has come into existence. But this study broke it down significantly and was able to moderate it significantly. Of course, based on the attention that people have to time. This was not found in other studies. People answered the questions based on personal opinions and views and participated in the

participation. In this study, for the first time, both statistical analysis and ranking methods were used in a research and a summary was reached. which has not been seen in a study so far. When we talk about the future, we are talking about a possible process. History has shown that it is always unpredictable in nature. In fact, there is a gap and a trend between what is predicted and what happens, such as the future of global participation and the future of participation in the country, for example, Romania.

Therefore, the future envisioned for the American continent from the end of the 21st century is definitely different from the future of the European and South African continents, and what is common is the existence of all three continents in the factor of time and, in other words, their imagining. It will be in the final moments of the 21st century. Based on the results obtained and due to the misleading nature of the issue of time, it cannot be managed, and people should not worry about time management, because they lose their focus. Therefore, they should manage their concentration and be focused in the moment. It is only in this way that you can use the time effectively and continue with the desired activity. This way will continue

ACKNOWLEDGMENT

The Doctoral Dissertation from which this article was extracted was handed over on August 23, 2022 to the supervisor Dr. Tajoddin Karmi, Assistant Professor of Faculty of Geographical Sciences and Department of Urban Planning, Kharazmi University has been delivered, I thank them. In line with the present research, in the world of physical and metaphysical sciences, there are people and personalities who have played an important role in the production of science and knowledge. Nikola Tesla, Nathaniel Branden, Albert Einstein, William James, Robert Adams, Napoleon Hill, Stephen Hawking, and recently, an interesting and unknown person under the title Satoshi Nakamoto. The performance and awareness of all these people has had a significant impact on the growth of knowledge, Individual consciousness and awareness. So they deserve to be appreciated. So far, articles have been extracted from this doctoral dissertation, for which I thank all those who seek the path of science and knowledge, especially respected publishers who value knowledge and technology, and I dedicate this article to all these dear ones.

REFERENCES

- Aeon, B., Faber, A., Panaccio, A., 2021. Does time management work? A meta-analysis. *PLoS ONE*, 16 (1), Pp. e0245066. <https://doi.org/10.1371/journal.pone.0245066/>
- Álvarez, L.A., and McCall, M.K., 2019. Participatory mapping and participatory GIS (PGIS) for archaeological and cultural landscapes studies: A review. *Journal of Archaeological Theory & Method*, 26 (2), Pp. 643–678. doi:10.1007/s10816-018-9385-z
- Anderson M.B., and Sternberg, C., 2013. Non-white' gentri- fication in Chicago's Bronzeville and Pilsen: Racial economy and the intra-urban contingency of urban redevelopment. *Urban Affairs Review*, 49 (3), Pp. 435-467. Article first published online: <https://doi.org/10.1177/1078087412465590>
- Anderson, M.B., and Radil, S.M., 2019. A hard binary to shake: The limitations and possibilities of teaching GIS critically, *The Canadian Geographer*, 64 (4), Pp. 471 - 483. <https://doi.org/10.1111/cag.12526>
- Arribas-Bel, D., Green, M., Rowe, F., Singleton, A., 2021. Open data products-A framework for creating valuable analysis ready data. *J. Geogr. Syst.*, 23 (4), Pp. 497–514. DOI:10.1007/s10109-021-00363-5
- Badwi, I.M., Ellaitly, H.M., Youssef, H.E., 2022. 3D-GIS Parametric Modelling for Virtual Urban Simulation Using CityEngine. *Annals of GIS*, 28 (3), Pp. 325-341. <https://doi.org/10.1080/19475683.2022.2037019>
- Barclay, D.A., 2022. *Disinformation: The Nature of Facts and Lies in the Post-Truth Era*, Publisher: Rowman & Littlefield Publishers, Pp. 301-302. | Published online: 13 Dec 2022, ISBN: 9781538144091, 1538144093, Pp. 304. <https://doi.org/10.1080/15228959.2022.2121136>
- Bayazit, O., 2006. Use of analytic network process in vendor selection decisions, *Bench marking: An International Journal*, 13 (5), Pp. 566-579. <https://doi.org/10.1108/14635770610690410>
- Bibri, S.E., 2018. *Smart Sustainable Cities of the Future: The Untapped*

- Potential of Big Data Analytics and Context-Aware Computing for Advancing Sustainability, Springer International Publishing AG, part of Springer Nature 2018 ISBN 978-3-319-73981-6 (eBook), Library of Congress Control Number: 2017963284,
- Brown, G., 2017. A Review of Sampling Effects and Response Bias in Internet Participatory Mapping (PPGIS/PGIS/VGI). *Transactions in GIS*, 21 (1), Pp. 39-56. <https://doi.org/10.1111/tgis.12207>
- Brunsdon, C., Comber, A., 2021. Opening practice: supporting reproducibility and critical spatial data science. *J. Geogr Syst.*, 23 (4), Pp. 477-496. DOI:10.1007/s10109-020-00334-2
- Builes, D., 2022. Look at the time!, *Analysis*, Volume 82, Issue 1, January 2022, Pages 15-23, <https://doi.org/10.1093/analys/anab008>
- Bustomi, T., and Avianto, B.N., 2021. City branding of the "music-design-culinary" as urban tourism of Bandung, West Java. *International Journal of Tourism Cities*, 8 (1), Pp. 53-69. <https://doi.org/10.1108/IJTC-06-2020-0123>
- Chen, Y.C., Hsiao, L.Y., Shou, D.W., and Yang, F.T., 2022. An Analysis of the Optimal Facility Location of Tourism Industry in Plain Region by Utilizing GIS, *SAGE Open*, 12 (2). <https://doi.org/10.1177/21582440221095020>
- Cochran, W.G., 1977. *Sampling Technique*. third Edition, John Wiley and Sons Inc., New York, Pp. 442. https://archive.org/download/Cochran1977SamplingTechniques_201703/Cochran_1977_Sampling%20Techniques.pdf
- Dunn, C.E., 2007. Participatory GIS-a people's GIS? *Progress in Human Geography*, 31 (5), Pp. 616-637. <https://doi.org/10.1177/0309132507081493>
- Fagerholm, N., Martín, M.G., Torralba, M., Bieling, C., Plieninger, T., 2022. Public participation geographical information systems. Participatory research methods for sustainability – toolkit #1 GAIA 31/1, Pp. 46 – 48. <https://doi.org/10.14512/gaia.31.1.10>
- Fallah, M., Karami, T., Kamanroodi, K.M., 2022. National Participant Geospatial Information System In Urban Planning. *Visnyk of V. N. Karazin Kharkiv National University series «Ecology» UDC: 504.03*, (27), Pp. 32- 50. <https://doi.org/10.26565/1992-4259-2022-27-03>
- Fallah, M., Karami, T., Kamanroudi, M., 2023. Explaining the Role of National Participant Geospatial Information System in the Effectiveness of Urban Services with a New Approach., *Jurnal geografi*, 15, (1), Pp. 33-46. <https://doi.org/10.24114/jg.v15i1.38992>
- Friedman, J., Hastie, T., and Tibshirani, R., 2010. Regularization paths for generalized linear models via coordinate descent. *Journal of Statistical Software*, 33 (1), Pp. 1-22. <https://doi.org/10.18637/jss.v033.i01>
- Friedman, M., 1959. The Demand for Money: Some Theoretical and Empirical Results, *Journal of Political Economy*, Volume ISBN: 0-87014-382-4, Volume 67, Number 4, Aug., 1959, Chapter pages in book: Pp. 1 – 29. <https://doi.org/10.1086/258194>
- Friedmann, J., 1987. *Planning in Public Domain, From Knowledge to Action*, Princeton University Press, Pp. 229, <https://doi.org/10.1515/9780691214009>
- Ghose, R., 2017. Public-participation GIS. In: Richardson D (ed.) *The International Encyclopedia of Geography*. New York: Wiley, Citations: 2, First published: 06 March 2017 <https://doi.org/10.1002/9781118786352.wbieg1155>
- Goreis, A., and Voracek, M., 2019. A systematic review and meta-analysis of psychological research on conspiracy beliefs: Field characteristics, measurement in struments, and associations with personality traits. *Frontiers in Psychology*, 10, Pp. 1-13. PMID:3085392 <https://doi.org/10.3389/fpsyg.2019.00205>
- Haiti Projects, 2019. Empowering Women and their families in Rural Haiti., <https://www.haitiprojects.org/what-is-haiti-projects>
- Haiti Situation Report, 2019. UN Office for the Coordination of Humanitarian Affairs. UN Office for the Coordination of Humanitarian Affairs., To learn more about OCHA's activities, <https://www.unocha.org> FTS: <https://fts.unocha.org/appeals/679/summary>
- Heinzelman Jessica, Waters Carol., 2010. Crowdsourcing Crisis Information in Disaster-Affected Haiti, by the United States Institute of Peace All rights reserved, 29, 2010, Special Report 252, Pp. 16, ID: des-1859, <https://www.usip.org/Publications/2010/09/crowdsourcing-crisis-information-disaster-affected-haiti>
- Indrajit, A., Van, L.B., Van, O.P., 2019. Assessing Spatial Information Themes in the Spatial Information Infrastructure for Participatory Urban Planning Monitoring: Indonesian Cities. *International Journal of Geo-Information*, ISPRS Int. J. Geo-Inf., 8, Pp. 305. <https://doi.org/10.3390/ijgi8070305>
- István, V., Lone, S.K., Sándor, J., Márta, L., Krisztina, F.K., Fekete, A., 2022. Assessing Relations between Cultural Ecosystem Services, Physical Landscape Features and Accessibility in Central-Eastern Europe: A PPGIS Empirical Study from Hungary. *MDPI, Sustainability*, 14, 754, Pp. 1-20. <https://doi.org/10.3390/su14020754>
- Johnson, M.S., Adams, V.M., Jason, N., Rebecca, M.B.H., 2022. The benefits of Q+PPGIS for coupled human-natural systems research: A systematic review. *Springer*, 51, Pp. 1819-1836. <https://doi.org/10.1007/s13280-022-01709-z>
- Kamarudin, M.K., Mohd, F.A., Mohamed, A.H., Rahim, A., Shaari, M.S.N., and Samad, M.A.A., 2022. GIS Tourism Web Based Kampung Seberang Ramai, Perlis. *Journal of Tourism Hospitality and Environment Management*, 7 (29), Pp. 123-138. <https://doi.org/10.35631/JTHEM.729010>
- Krejcie, R.V., and Morgan, D.W., 1970. Determining sample size for research activities. *Educational and psychological measurement*, 30 (3), Pp. 607-610. <https://doi.org/10.1177/001316447003000308>
- Lara, P.C., Tabory, S., Tong, K., Servadio, J.L., Kappler, K., Xu, C.K., Lawal, A.S., Wiringa, P., Kne, L., Feiock, R., Marshall, J.D., 2022. A data framework for assessing social inequality and equity in multi-sector social, ecological, infrastructural, urban urban systems: Focus on fine-spatial scales, National Science Foundation: Smart and Connected Communities (NSF S&CC); National Science Foundation: Sustainable Research Network (NSF SRN). First published 15 January 2022, <https://doi.org/10.1111/jiec.13222>
- Lewenstein, B.V., 2022. Is Citizen Science a Remedy for Inequality?, *AAPSS Journals*, Issue published, 700 (1), Pp. 183-194. <https://doi.org/10.1177/00027162221092697>
- Lewenstein, B.V., 2022. Is Citizen Science a Remedy for Inequality? *AAPSS Journals*, Issue perspectives. *Public Adm.*, 79 (2), Pp. 445-455. <https://doi.org/10.1177/00027162221092697>
- Liu, Y., and Brown, G., 2017. Bridging the Knowledge Divide between Public and Experts using PGIS for <http://dx.doi.org/10.1016/j.apgeog.2017.03.013>,
- Malpass, A., 2021. All the time in the world, *Mind*, fzaa086, 28 February 2021, *Mind*, 202, Pp. 1-20. <https://doi.org/10.1093/mind/fzaa086>
- Mariakakis, A., Ravi, K., Shwetak, N.P., Julie, A.K., James, F., Sean, A.M., 2022. *JMIR Human Factors*, *JMIR Hum Factors*, 9 (1), Pp. e30474.
- McAllister, J.W., 2020. Does Artistic Value Pose a Special Problem for Time Travel Theories?, *The British Journal of Aesthetics*, Volume 60, Issue 1, January 2020, Pp. 61-69. <https://doi.org/10.1093/aesthj/ayz041>
- Moghaddam, M.D., Ahmadzadeh, H., Valizadeh, R., 2022. A GIS-Based Assessment of Urban Tourism Potential with a Branding Approach Utilizing Hybrid Modeling. *Spat. Inf. Res.*, 30 (3), Pp. 399-416. <https://doi.org/10.1007/s41324-022-00439-4>
- Morrow, A., Mock, N., Papendieck, A., Kocmich, N., 2014. Independent Evaluation of the Ushahidi Haiti Project, Some of the authors of this publication are also working on these related projects.,
- Novy, J., 2019. Urban tourism as a bone of contention: Four explanatory hypotheses and a caveat. *International Journal of Tourism Cities*, 5 (1), Pp. 63-74. <https://doi.org/10.1108/IJTC-01-2018-0011>
- Prener, C., 2021. Digitizing and Visualizing Sketch Map Data: A Semi-

- Structured Approach to Qualitative GIS, *The International Journal for Geographic Information and Geovisualization*, 56 (4), Pp. 267–283. DOI: 10.3138/cart-2020-0030
- Radil, S.M., and Anderson, M.B., 2018. Rethinking PGIS: Participatory or (post)political GIS?, *Progress in Human Geography*, 43 (2), Pp. 195–213, <https://doi.org/10.1177/0309132517750774>
- Saaty, T., 2004. Fundamentals of the Analytic Network Process-dependence and Feedback in Decision-making with a Single Network. *Journal of Systems Science and Systems Engineering*, 13 (2), Pp. 129-157. DOI:10.1007/s11518-006-0158-y
- Sam, B., Kristie, M., Jonathan, T., 2022. Out of Time, Oxford University Press, This title will be released on June 14, 2022 ISBN-13: 978-0192864888, ix-CLP7, <https://doi:10.1093/oso/9780192864888.001.0001>
- Sharma, L., and Garg, K., 2021. Artificial Intelligence: Technologies, Applications and Challenges: Boca Raton, Chapman and Hall/CRC. Computer Science, Engineering & Technology, eBook ISBN 9781003140351, Pp. 264. <https://doi.org/10.1201/9781003140351>
- Shirshamsi, A., Mirabi, V., Hasanpour, E., and Ranjbar, M., 2021. The effect of e-marketing on the development of the tourism industry case study: Yazd city. *Urban Tourism*, 7 (4), Pp. 35–47. <https://doi.org/10.22059/jut.2021.315495.864>.
- Silva, C.N., 2013. Open-source urban governance: crowdsourcing, neogeography, VGI and citizen science. In: Silva CN (ed) *Citizen e-participation in urban governance: crowdsourcing and collaborative creativity*. IGI Global, New York, Pp. 1–18., DOI: 10.4018/978-1-4666-4169-3.ch001
- Statistical yearbook of Iran, 2018. national portal of statistics "Population of cities of Iran, Statistics Center of Iran, <https://www.amar.org.ir/english/Iran-Statistical-Yearbook>
- Sternberg, C., and Anderson, M.B., 2014. Contestation and the local trajectories of neoliberal urban governance in Chicago's Bronzeville and Pilsen. *Urban Studies*, 51 (15), Pp. 3198-3214. DOI:10.1177/0042098014532143
- Tabatabai, A., Zarei, B., Kamran, D.H., Ahmadi, A., 2022. Investigating the process of formation of national identity in Iran, in terms of territorialism. *Journal of Geography*, 20 (72), Spring 2022, <http://dor.net/dor/20.1001.1.27833739.1401.20.72.2.8>
- Teixeira, H., Magalhães, A., Ramalho, A., 2021. Indoor Environments and Geographical Information Systems: A Systematic Literature Review: *The International SAGE Journals*, 11 (4), online: October 13, 2021; Issue published: October 1, 2021, <https://doi.org/10.1177/21582440211050379>
- Uğur, N.G., and Akbıyık, A., 2020. Impacts of COVID-19 on global tourism industry: A cross-regional comparison. *Tourism Management Perspectives*, 36, Pp. 100744. <https://doi.org/10.1016/j.tmp.2020.100744>
- Urban sari with 6 thousand years old and historical memory., 2018. received on 20-12-2018, https://en.wikipedia.org/wiki/Sari,_Iran
- Ushahidi Haiti Project Evaluation, 2011. All content following this page uploaded by Nathan Morrow on 30 October.2014,https://www.researchgate.net/profile/NathanMorrow/publication/265059793_Ushahidi_Haiti_Project_Evaluation_Independent_Evaluation_of_the_Ushahidi_Haiti_Project/links/5451ef8f0cf2bf864cbaaca9/Ushahidi-Haiti-Project-Evaluation-Independent-Evaluation-of-the-Ushahidi-Haiti-Project.pdf
- Wessels, B., 2010. The Role of Local Agencies in Developing Community Participation in E-Government and E-Public Services, *Handbook of Research on E-Planning: ICTs for Urban Development and Monitoring*, (University of Sheffield, UK), Pages: 20 DOI: 10.4018/978-1-61520-929-3.ch015
- Weword, 2022. Country experienced 30 shocks in total, Situational Report #01 - Haiti January 2022 Haiti is constantly afflicted by earthquakes: between 24th-25th January the. Pp. 1-4, https://reliefweb.int/attachments/93e45f8d-43c8-388a-81d7-eeeba962bf67/2202_Haiti%20Earthquake%20SitRep%2001.pdf
- Youngchoi, S., Abel, M., Siqi-Liu, A., and Umanatha, S., 2021. National Identity Can be Comprised of More Than Pride: Evidence From Collective Memories of Americans Germans, *Journal of Applied Research in Memory and Cognition*, 10 (1), Pp. 117-130. <https://doi.org/10.1016/j.jarmac.2020.09.004>
- Zolkafli, A., Liu, Y., and Brown, G., 2017. Bridging the Knowledge Divide between Public and Experts using PGIS for Land Use Planning in Malaysia. *Applied Geography*, 83, Pp. 107-117,

